

Multi-functional trailer and asset tracking

EDT AssetLog and WorldFleetLog Web application provide the best of all worlds:

- IP67-rated tracking device with long-life internal battery
- Optional solar panel for remote applications
- Asset management based on the WorldFleetLog platform

EDT AssetLog offers:

- Long life functionality - up to 2000 transmissions in fully charged battery
- Increase security and minimize risk of your trailers and assets
- Decrease time locating your trailers and assets
- Smart battery power conserving functionality
- Easy installation with a strong magnets set

EDT AssetLog is fit for use in trailer and asset security management operations.

WorldFleetLog

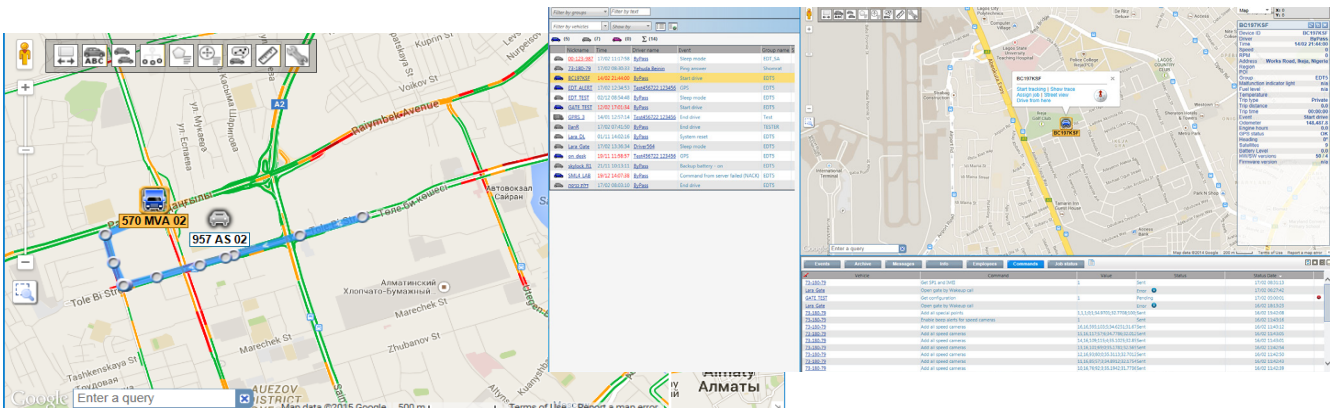
Integration with EDT's WorldFleetLog Web-based tracking and monitoring solution, provides real time vehicle location, vehicle status, and driver behavior data. Generated Reports based on user-defined parameters are easily accessed by designated fleet managers.

WorldFleetLog Reports

Use the WorldFleetLog report generation engine to tool to automatically schedule, create and deliver hundreds of standard and user-defined reports. Generated reports can be exported to Excel, PDF and XML formats.

Key Features:

- Quad Band 2G or Dual Band EU/US for 3G Cellular
- Supports 12/24V operation
- 5800mAh integrated backup battery
- Low power consumption (Standby <300µA)
- Embedded GSM and GPS antennas for low profile installations
- Supports attachment by exceptionally strong magnets to use the AssetLog as a detached, transferable tracking device
- Geo-Fence management and alerts
- Self-tracking mode
- Text alerts
- Cellular jamming detection with text alert feature
- Home/Roaming management
- Trailer identification feature (optional, using EDT Trailer ID solution)
- Integrated 3D accelerometer and shock sensor to detect motion, movement in order to enhance battery life and efficiency
- I/Os and ignition port combinations
- Over-the-Air configuration abilities for rules, Geo-fencing, Reporting intervals, and Firmware updates



AssetLog

Technical Specifications

Hardware

Cellular	GPRS Quad-Band 900/1800/850/1900 / GPRS/UMTS/HSDPA Dual-Band US850/1900 or EU900/2100 + Optimized antenna
Location	MTK chipset, 99 channels, GPS/GLONASS Active antenna, Sensitivity -165 dB, NMEA0183 Acquisition: (normal): cold 34s, warm 34s, hot 1s Accuracy: 2.5m CEP + Embedded optimized antenna
Communication	TCP/IP over GPRS/UMTS/EDGE/HSPA, text messages
Accelerometer	8G Sensitive 3 dimension accelerometer, Sampling Rate: 10 m/sec
Connectors	10 -pin Molex type connector
Input ports (always)	1 digital input
Additional ports	2 input, 2 output, 2 I/Os, 1 data for selected accessories, available only while using external power
Dedicated port	Ignition port
Power Supply	9-32VDC, 20-30mA, Low power mode (GPS off) < 10mA, Power save mode (Standby) < 300.0µA (average)
Backup Battery	Rechargeable, 3.6V, 5800mAh (Li-Poly or Li-ion)
Car Interface	Ignition On/Off, Engine On/Off (by voltage)
Data Logger	10,000 messages (up to 20,000 optional)

Environment

Operating temperature	-20° to 70°C
Storage Temperature	-40° to 85°C
Dimensions	16cm x 6.3cm x 3.4cm
Weight (Net)	250g
Durability	Water and vibration resistant/IP67
Max. relative humidity	90+/-5%
Certifications	CE, FCC, PTCRB, IC

Optional Accessories

Charger Kit	Cigarette Lighter charger + 220 VAC
Heavy duty magnet set	Supports attachment by exceptionally strong magnets to easily transfer the AssetLog from one object to another
Main Unit wall mount charger	500 mA

Heavy Duty Magnet Kit

