

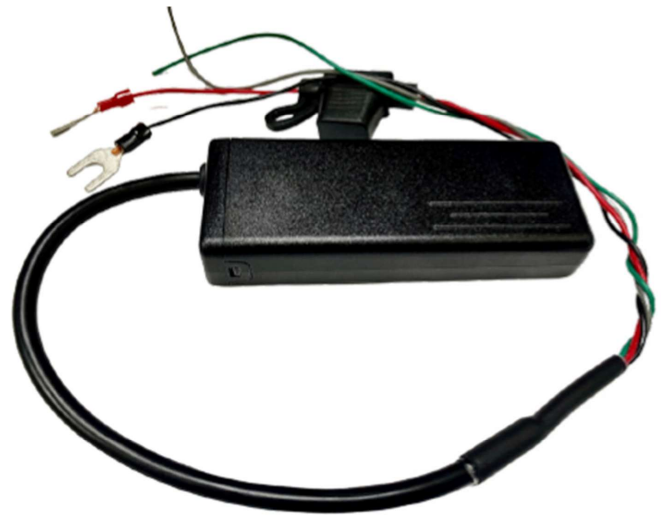
# OnBATT CATm-1 (LTE/2G)

## Compact Waterproof Tracking Device

EDT OnBATT is a small-size tracking device, designed for fast installation on the vehicle battery. OnBATT supports applications such as UBI (usage based insurance) and features a waterproof casing, standard short range wireless communication for accessories, add-ons and integration with mobile apps.

OnBATT features EDT's Safety Technology, to provide real-time information about unsafe driving behavior, accidents, speed violations etc. OnBATT automatically identifies 20 maneuver types in three severity levels - Normal, Aggressive, and Dangerous. OnBATT 'Black-Box' mode detects real-time accident events and stores before and after the accident data with a high sampling rate of 100 times per second for accurate post-accident analysis.

For installation simply tape the device on top of the vehicle's battery, connect the power and the device is installed and operational.



EDT OnBATT

## EDT OnBATT Features

- Very low power consumption
- Especially suited for motorcycle tracking & anti-theft with a built-in silent alarm
- Supports an optional 12V external relay for remote immobilization
- Integrated 3-axis accelerometer & shock sensor provides fall, accident detection, and towing alerts
- Driver behavior monitoring with 20 predefined maneuver types in three levels: Normal, Aggressive, Dangerous
- Water and vibration resistant

## Available Product Variations

### SF

A 3D high-sensitivity accelerometer and gyroscope support EDT's Safety technology for driving behavior analysis and black box feature. This technology can identify 20 maneuver types at three levels of severity, and provides event-based driving behavior alerts.

## Technical Specifications

### Hardware

#### Cellular Options:

- LTE 4G CAT4
- LTE 4G CAT M1/NB

#### Location:

- GPS/GLONASS/GALILEO , Active antenna, Sensitivity -165 dB, NMEA0193, Acquisition (normal): cold <34s, warm <34s, hot <1s, accuracy: 2.5m CEP  
Embedded optimized antenna

#### Communication:

- TCP/IP over GPRS/LTE,  
Standard short range communication module v4.0

#### Power Supply:

- 9-32VDC, 20-30mA

#### Back up battery:

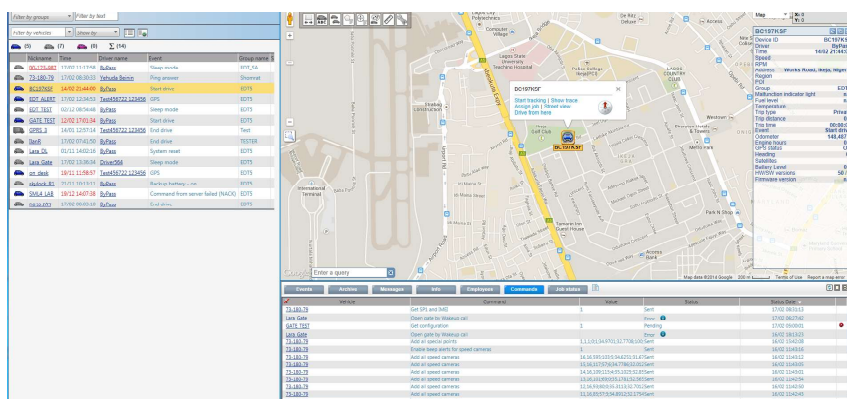
- Rechargeable, 3.7V, 350mAh (Li-Poly or Li-ion)

#### Data Logger:

- Up to 8,000 messages

## Cloud-based Management

OnBatt is fully integrated with EDT's WorldFleetLog cloud-based tracking and monitoring solution to provide real time vehicle status and driver behavior data.



View vehicle location and events in real-time.

### Configuration/Firmware Update

- OTA/Via Standard PC USB Port, for parameter setup and software programming

### Environment

- Operating temperature: -20 to 70°C
- Storage temperature: -40 to 85°C
- Dimensions: 10 cm x 5.9 cm x 2.3 cm
- Weight (NET): 120 g
- Water and vibration resistant
- Max. relative humidity: 70+/-5%

